



Clive House

Esher, Surrey

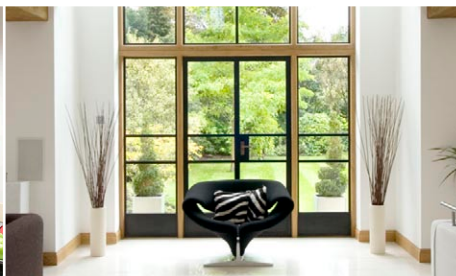
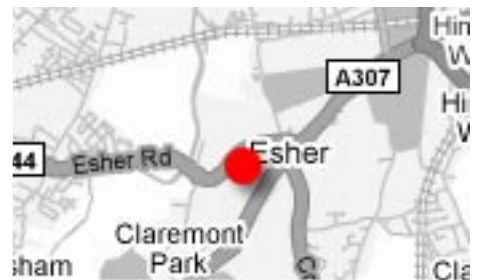
A unique and spectacular grand designed 5 bedroom property situated on a private road in the heart of Esher

Features included:

- Vaulted farm house style kitchen with bespoke walnut cabinetry
- 65ft open plan drawing/ family room with double height galleried reception.
- Integrated audio and home cinema system
- Solid oak window frames fitted with original Crittal casements
- Solid oak internal doors
- Solid stone and oak fireplaces
- Vaulted Master and Guest bedroom suites
- Secluded outdoor entertainment area and BBQ deck
- Large south facing grounds

This property was featured in "25 Beautiful Homes" magazine 2007 and was selected for Crittal's marketing brochures and ad campaign

Price: SOLD



www.hyattgroup.co.uk

01234 567 890
info@hyattgroup.co.uk